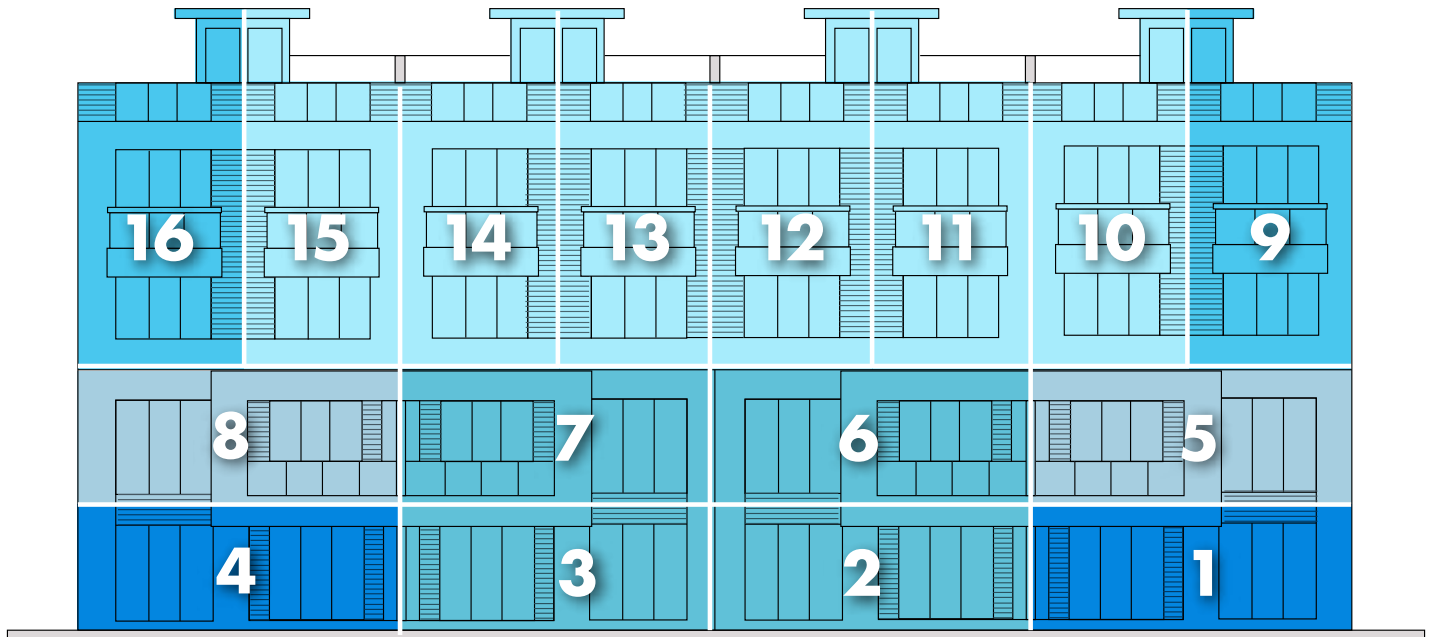


# RESIDENCE KEY



- TYPE A**  
 3 BED 1 STOREY  
 UNITS 1, 4
- TYPE B**  
 3 BED 1 STOREY  
 UNITS 2, 3, 6, 7
- TYPE C**  
 3 BED 1 STOREY  
 UNITS 5, 8
- TYPE D**  
 3 BED + DEN 3 STOREY  
 UNITS 9, 16
- TYPE E**  
 3 BED + DEN 3 STOREY  
 UNITS 10, 11, 12, 13, 14, 15

VIEW OF THE RESIDENCES FROM THE OCEAN.

# ONE-STOREY, THREE BEDROOM CONDO



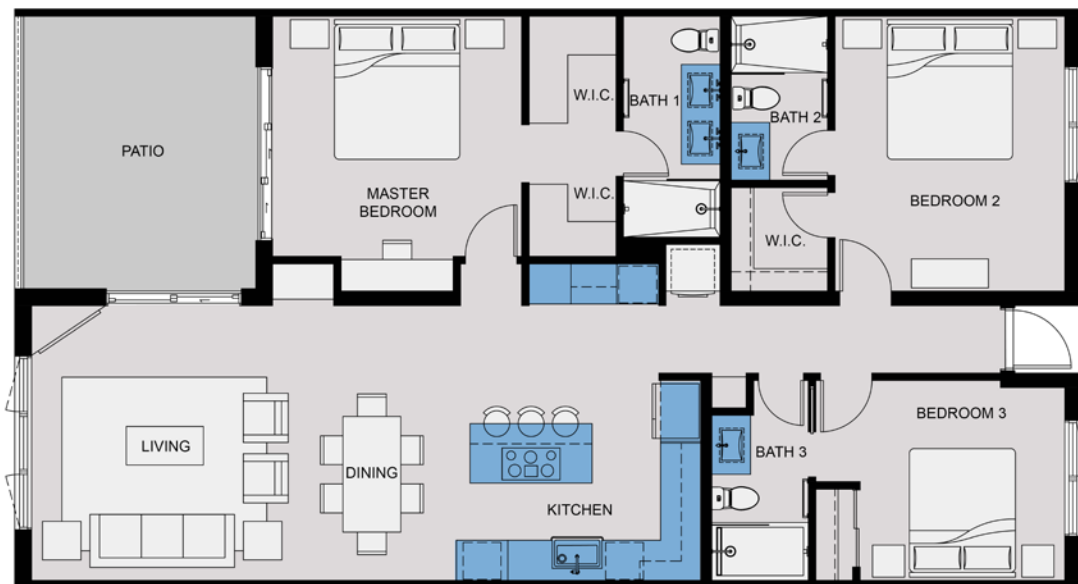
FIRST FLOOR

## UNIT TYPE A

UNITS 1 AND 4

TOTAL AREA: 1,675 SQ.FT.

# ONE-STOREY, THREE BEDROOM CONDO



FIRST AND SECOND FLOOR

## UNIT TYPE B

UNITS 2, 3, 6 AND 7

TOTAL AREA: 1,647 SQ.FT.

# ONE-STOREY, THREE BEDROOM CONDO



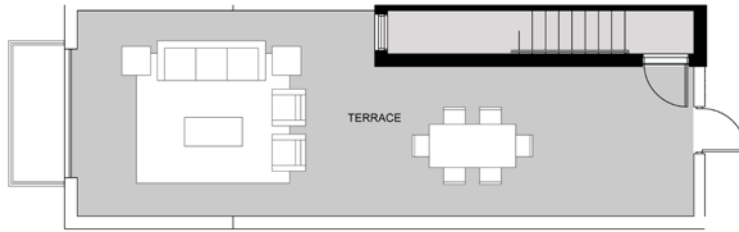
SECOND FLOOR

## UNIT TYPE C

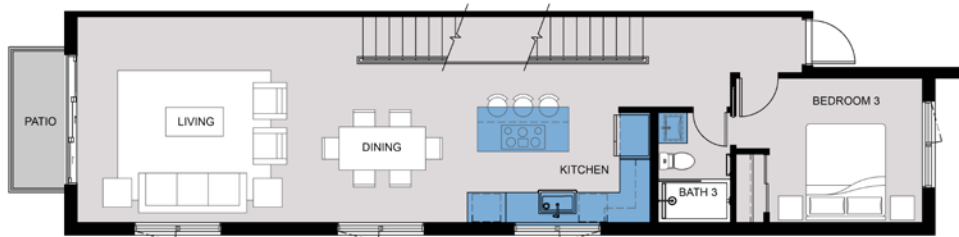
UNITS 5 AND 8

TOTAL AREA: 1,733 SQ.FT.

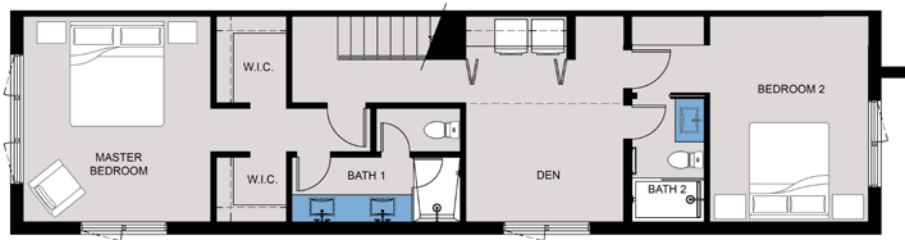
# THREE-STOREY, THREE BEDROOM + DEN/FOUR BEDROOM TOWNHOME



ROOF TERRACE



FOURTH FLOOR



THIRD FLOOR

## UNIT TYPE D

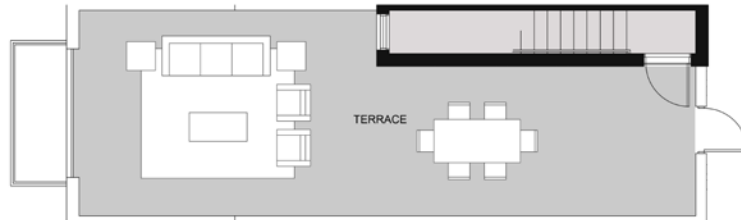
UNITS 9 AND 16

TOTAL AREA: 2,455 SQ.FT.\*

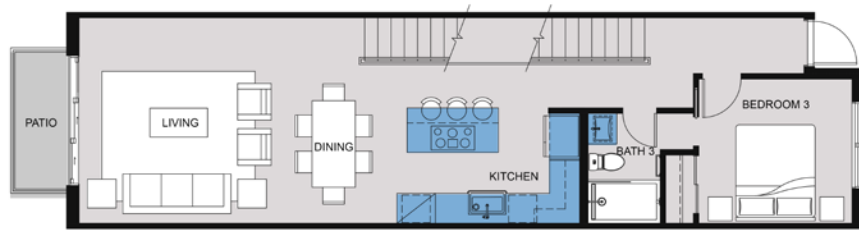
ROOF TERRACE AREA: 590 SQ. FT.

\*Includes roof top terrace

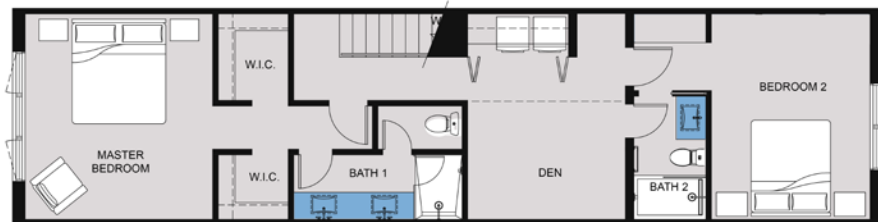
# THREE-STOREY, THREE BEDROOM + DEN TOWNHOME



ROOF TERRACE



FOURTH FLOOR



THIRD FLOOR

## UNIT TYPE E

UNITS 10, 11, 12, 13, 14 AND 15

TOTAL AREA: 2,317 SQ.FT.\*

ROOF TERRACE AREA: 568 SQ. FT.

\*Includes roof top terrace

## CONTACT

For more information, please contact:

**TANIA KNAPIK**  
**SALES & MARKETING MANAGER**  
**NCB GROUP**

info@wavescayman.ky  
345.325.6868

wavescayman.ky

WAVES

