



S O L A R A



LUXURY CANAL FRONT LIVING

NCB Group is pleased to introduce **SOLARA** – a distinctive collection of luxury town houses that will provide the ultimate lifestyle haven in a location that continually inspires. Situated in beautiful Crystal Harbour, across from NCB's impressive community of Cypress Pointe North, **SOLARA** consists of 26, three story, 3 bedroom luxury town houses. Every residence has incredible water views of an expansive canal and bay. Boating enthusiasts have direct access to the North Sound right from their own boat slip in a private Marina that is wrapped with a unique waterfront promenade. The world famous Seven Mile Beach with pristine white sand and turquoise blue water is just moments away. Restaurants, shopping, banks, grocery stores and any other amenities you might need are only minutes away.

LOCATION

Nestled in the majestic waters of the Western Caribbean, the Cayman Islands consists of three charming islands and boasts some of the most beautiful beaches in the world. A quick one hour flight from Miami, Grand Cayman offers visitors and residents an idyllic environment and enviable lifestyle. A stable British overseas territory with no direct taxation and a sophisticated infrastructure unique to the Caribbean, has resulted in a thriving offshore financial centre. Combined with one of the highest standards of living in the world, exceptional dining and entertainment options, modern amenities including superior health care, quality education and a myriad of arts, cultural and sporting events - the Cayman Islands is an incredible place to live and work.





ENERGY EFFICIENT COMMUNITY

All our luxury town houses will be energy efficient, offsetting their electrical use through solar panels and powering their air-conditioning through geothermal technology. Interior temperatures will be environmentally maintained through insulated concrete forms (ICF), solid concrete walls, double glazed windows and state-of-the-art flooring systems. Coupled with the latest, energy saving LED lighting and energy efficient appliances, these residences will offer an impressive blend of luxury and sustainability.

The use of renewable energy systems increases the appraised value of these homes while substantially reducing electricity bills and dependence on fossil fuels. Not only will you save money but you will also protect the environment by reducing your carbon footprint.



DISTINCTIVE DESIGN

NCB Group has partnered with Waves Project from Italy and MJM Design Studio of Cayman to bring you a selection of thoughtfully designed town houses.

Stefano Napolitani, Waves Project is an internationally renowned Italian Naval Architect who studied engineering in England. After an incredibly successful career in New York, he returned to Italy and started designing custom made Yachts and later on hotels and houses through his Architectural firm Waves Project, based in Milan. He is now designing major residential condominium and villa developments with Waves Project. This is Stefano's second residential development with NCB Group, the first one being TIDES in South Sound.

MJM Design Studio is a leading Western Caribbean architectural firm based in the Cayman Islands. Founded in 2001 by Michael and Joelle Meghoo, MJM Design Studio has successfully provided architectural and development consulting services to the Islands' residential and commercial market. MJM also consulted on our TIDES project.

Elegant finishes and fixtures will be integrated in the overall, clean modern living spaces that define the design of these homes.





LUXURY 3 BEDROOM TOWN HOUSES

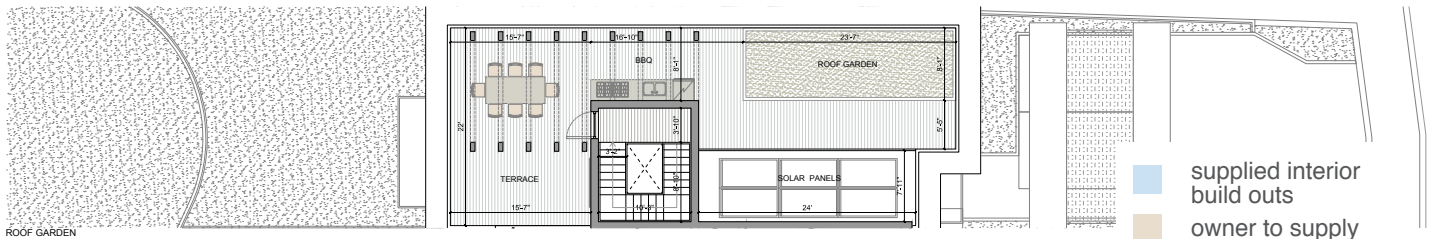
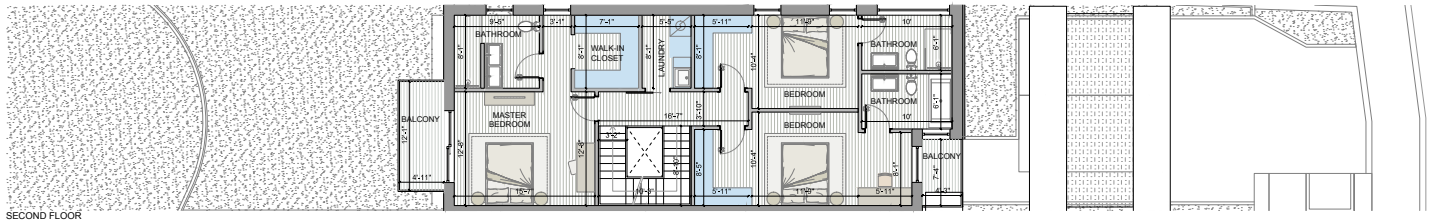
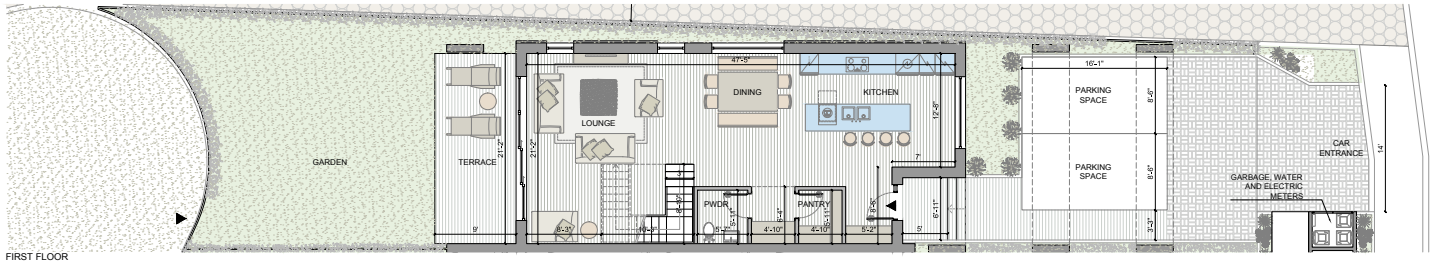
In one of Cayman's most coveted neighbourhoods overlooking Mitchell's Creek and leading out to Crystal Harbour, these units offer fabulous views from each one of its three levels including a roof top terrace. The open concept and contemporary layout provides an idyllic level of comfort and efficiency. Free floating stairs connecting each level create a dynamic architectural statement that compliments the impeccably finished interior.

Each town house features three bedrooms, has a private driveway, a double car port, private gardens and range in size from 2,700 – 3,000 sq. ft. Seven of the 26 residences have the option of having a private pool.

An open floor plan with a stunning roof top terrace, seamlessly integrates indoor and outdoor living, allowing homeowners to take advantage of the exceptional water views and enviable Cayman climate. A quaint garden graces this roof top terrace which also features an outdoor dining area and BBQ. Natural light is brought into the middle of each residence through unique light coves.

Kitchens feature high-end energy efficient, stainless steel appliances, quartz counter tops and solid-wood cabinets. Upstairs, the master bedroom has a private balcony overlooking the promenade and canal. All bedrooms have custom walk-in closets.



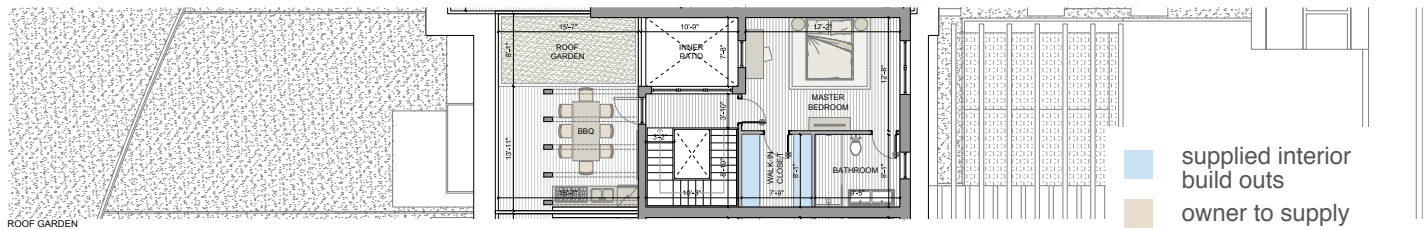
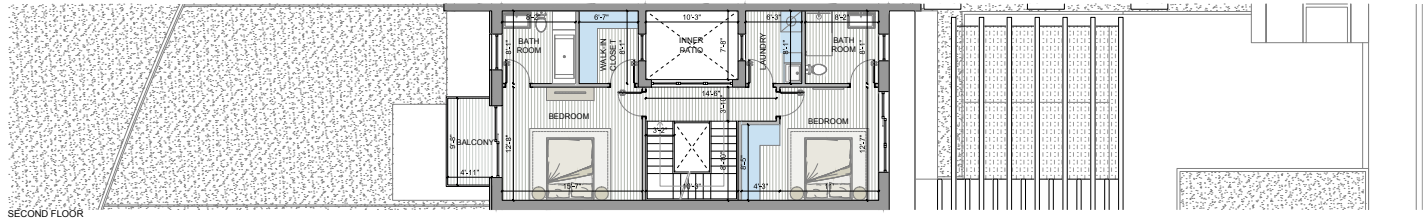
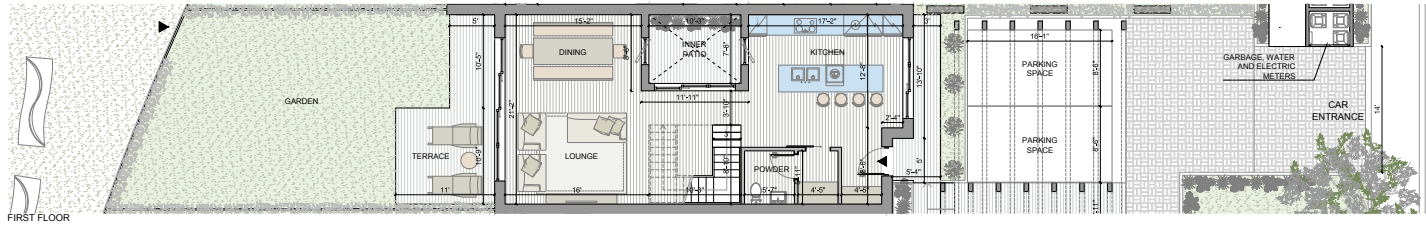


supplied interior build outs
 owner to supply

TYPE 1 SEMI-DETACHED HOME*

Indoor Surface	2111 sq. ft
Terrace Surface	287 sq. ft
Garden Surface	1594 sq. ft
Roof Garden Surface	822 sq. ft
Bedrooms	3
Bathrooms	3
Powder Rooms	1
Walk In Closets	2

*Represents average square footage. Area may vary based on unit number.

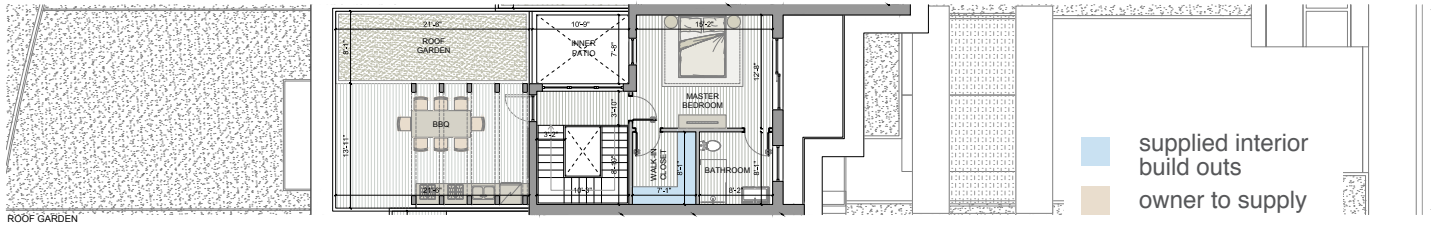
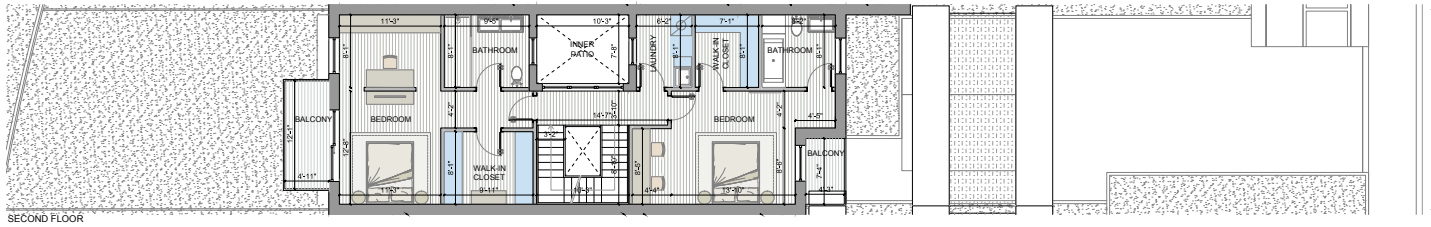
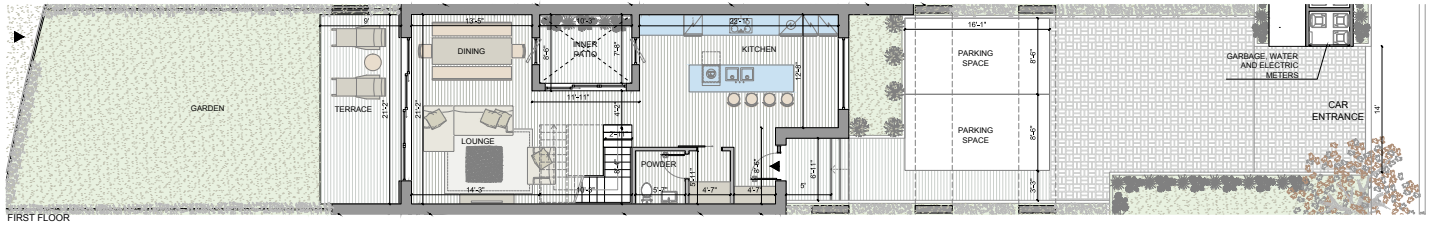


■ supplied interior build outs
■ owner to supply

TYPE 2 TOWN HOUSE*

Indoor Surface	2010 sq. ft
Terrace Surface	366 sq. ft
Garden Surface	767 sq. ft
Roof Garden Surface	335 sq. ft
Bedrooms	3
Bathrooms	3
Powder Rooms	1
Walk In Closets	2

*Represents average square footage. Area may vary based on unit number.

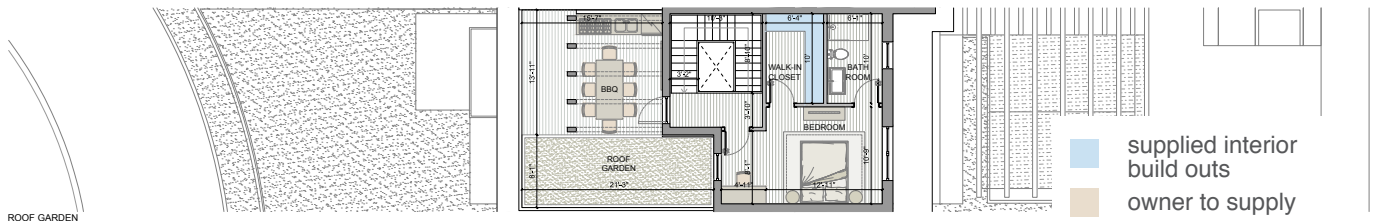
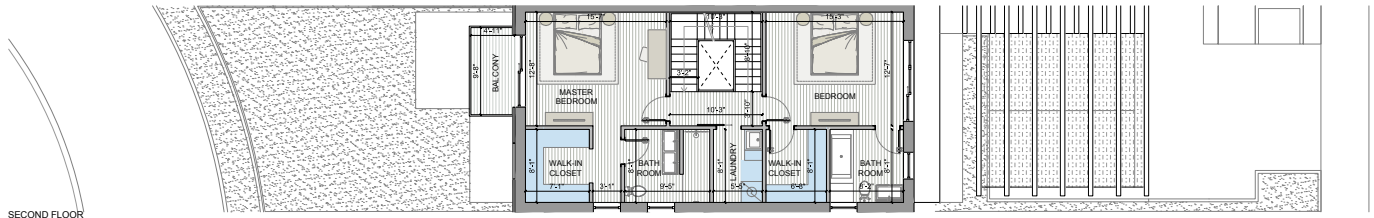
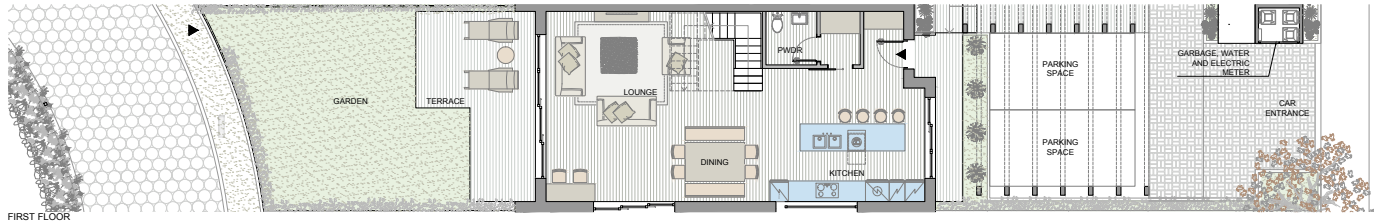


■ supplied interior build outs
■ owner to supply

TYPE 3 TOWN HOUSE*

Indoor Surface	2235 sq. ft
Terrace Surface	358 sq. ft
Garden Surface	1,770 sq. ft
Roof Garden Surface	342 sq. ft
Bedrooms	3
Bathrooms	3
Powder Rooms	1
Walk In Closets	3

*Represents average square footage. Area may vary based on unit number.



supplied interior build outs
 owner to supply

TYPE 4 SEMI-DETACHED HOME*

Indoor Surface	2111 sq. ft
Terrace Surface	286 sq. ft
Garden Surface	1706 sq. ft
Roof Garden Surface	387 sq. ft
Bedrooms	3
Bathrooms	3
Powder Rooms	1
Walk In Closets	3

*Represents average square footage. Area may vary based on unit number.



Clubhouse with state-of-the-art gym, community pool, bbq and entertaining area.



AMENITIES

Residents of **SOLARA** will have access to unparalleled amenities including the use of a clubhouse with resort-style pool, a fully equipped gym and a beautiful promenade that wraps the canal with bench seating, where breathtaking sunsets can be enjoyed daily. Each resident will also have their own boat slip and access to the adjacent Crystal Harbour amenities which will include a sport court, outdoor exercise area, children's playground and park.



SOLARA is being developed by NCB Group – one of Cayman’s premier residential developers. NCB was established in 2001, by Naul Bodden, one of the most established and successful real estate developers in Cayman. The company’s goal was focused on not just building homes but on creating communities, ones that thrive and remain self sufficient long after the developer has moved on.

NCB has grown to cover 8 distinct service lines: Design, Development, Construction, Project Management, Property Services, Electrical, Plumbing and Geothermal Cooling. The NCB one stop approach to residential home building covers concept design, planning approvals, surveying, infrastructure works, actual home construction and landscaping.

NCB expands this basic package to also

include client customization, with experienced in office personnel who can walk through each stage designing and coordinating every aspect from exterior to interior finishings. In addition, services can include sustainability customization to meet of our clients renewable goals.

This one stop shop service has established NCB today as the premier residential developer in the Cayman Islands. Our hands on approach from the conceptual plan and acquisition of raw land through to completion of infrastructure works and residence ensures the quality of all our communities is in keeping with the perceived style and special connectivity that forms the project vision.

www.ncbgroup.ky

CONTACT

For more information on floor plans,
pricing and availability contact:

345.946.9622

solara@ncbgroup.ky

Another Quality Project By

